

PEER

Promoting Empathy through Equitable Resolution

“It is easier to build strong children than to repair broken men.”

Frederick Douglass

Arlington's Answer to Juvenile Justice Reform



CYFA

Center for Youth & Family Advocacy
2111 Wilson Boulevard, 8th Floor
Arlington, VA 22201
www.cyfadadvocacy.org

OUR MISSION

CYFA strives to bring our community together in the pursuit of solutions to social justice issues. CYFA created Promoting Empathy through Equitable Resolution (PEER) not only to address racial inequities in the juvenile justice system, but also to provide a more effective and fair alternative to the traditional responses to delinquency and school discipline. PEER applies restorative justice practices to address harmful behavior. A restorative approach to justice goes beyond punishment through facilitated dialogue that both ensures accountability and repairs relationships. PEER differs from other restorative programs because it empowers youth to resolve disputes in a peer-to-peer setting supported by trained restorative practice professionals.

Prevention

Intervention

Restoration

Staff

Devanshi Patel
Chief Executive Officer

Molly Newton
Chief Operating Officer

William Turner
Chief Information &
Technology Officer

Gregory Baldwin
Director of Restorative
Practices

RESTORATIVE JUSTICE



PEER applies restorative justice practices to delinquency and school discipline cases to ensure accountability, repair relationships, and restore community trust.

1

COMMUNITY-BASED CONFLICT RESOLUTION

Repairs harm and rebuilds relationships within the community

2

EVIDENCE-BASED PRACTICES

The best available current research applied in practice

3

RESEARCH-BACKED RESULTS

Research consistently shows better outcomes than traditional court



Restorative Justice

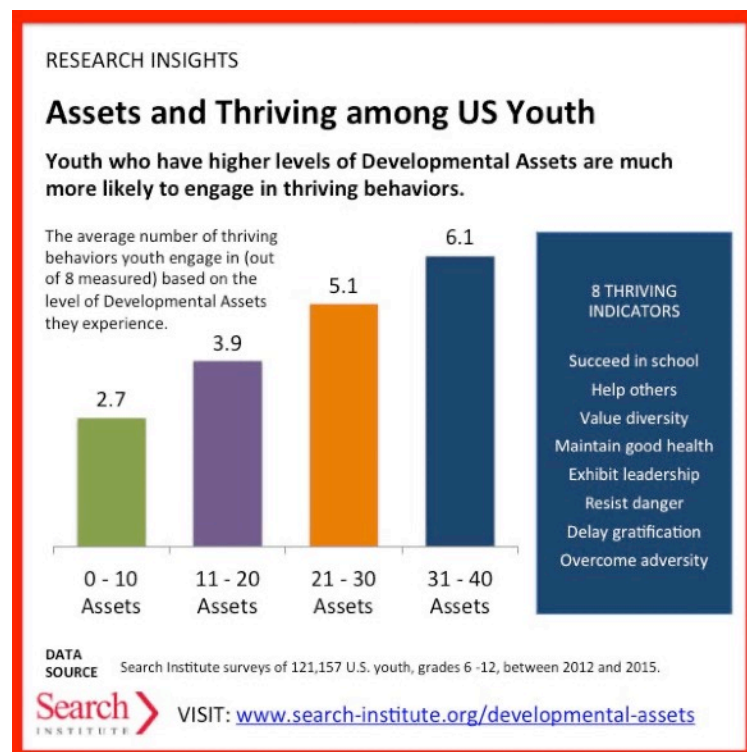
At its core, the justice system is the government's response to crime. In the United States, the traditional response seeks to punish certain behaviors and, to a lesser extent, rehabilitate those who engage in them. This process largely ignores the victim's needs, the community's input, and the harm's underlying cause. Since the traditional justice system's reliance on incarceration has had disparate impacts on minority communities while also failing to reduce recidivism, punitive justice compels re-examination.

Restorative justice differs from traditional forms because it pursues different goals—i.e., ensuring accountability, repairing relationships, and restoring victims and the community. Restorative justice practitioners bring together the victim, the wrongdoer, and the community through facilitated dialogue. This process empowers victims by providing a voice in the outcome and an opportunity to heal, enables wrongdoers to learn from their mistakes and make amends, and allows the community to affirm its values and re-invest in its members.

PEER's Goals:



1. Reduce disproportionate minority youth representation in the juvenile justice system and school disciplinary proceedings;
2. Hold young people who commit harm accountable for their actions without exposing them to a criminal record;
3. Provide persons who have been harmed an opportunity to be actively involved in their case;
4. Reduce the likelihood of a young person's future harmful criminal and behavioral acts; and
5. Develop leaders to move with greater agency, confidence, skill, knowledge, and empathy while creating a more effective and fair juvenile justice system.



PEER endorses the Developmental Assets Framework created by Search Institute, a non-profit that researches, identifies, and seeks to improve the qualities that youth need to succeed.

ARLINGTON JUVENILE ARRESTS BY SELECT CATEGORY¹

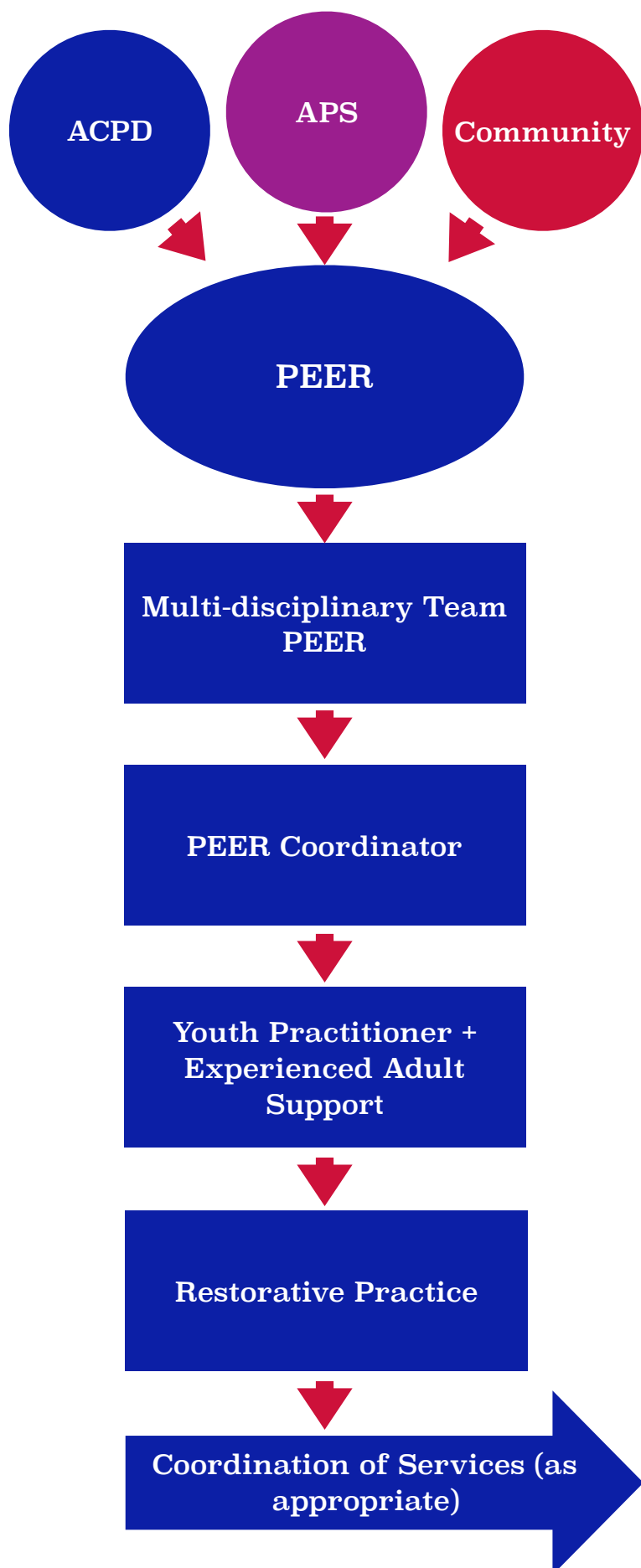
| | 2010 | 2013 | 2017 |
|-----------------|----------|----------|----------|
| Drug/ Narcotics | 36 (18%) | 39 (17%) | 38 (21%) |
| Alcohol | 21 (11%) | 60 (27%) | 27 (15%) |
| Larceny/Theft | 46 (23%) | 31 (14%) | 18 (10%) |
| Weapon | -- | -- | 12 (7%) |
| Assault | 36 (18%) | 29 (13%) | 6 (3%) |

TOP 3 OFFENSE TYPES RESULTING IN OUT OF SCHOOL SUSPENSION, APS¹

| | 2013-14 | | 2017-18 | |
|---|----------------|-------|----------------|-------|
| | Total Offenses | Susp. | Total Offenses | Susp. |
| Against Person | 171 | 81 | 212 | 127 |
| Related to Behavior | 93 | 86 | 169 | 109 |
| Related to Alcohol, Tobacco, and Drugs (ATOD) | 23 | < | 95 | 43 |

Source: APCYF 2019 Community Report

PEER's Methodology:



PEER differs from many restorative justice practices because it empowers our youth to resolve disputes between colleagues in a peer-to-peer setting. Each youth practitioner will lead restorative practices with the support of a trained adult practitioner and will have received 30 to 40 hours of training before serving in any capacity. PEER will maintain practice manuals and administration guidelines to ensure equity in the process. In addition, PEER will coordinate access to services for young persons and families as appropriate.

PEER will measure outcomes through the lens of recidivism—specifically, the number, severity, and timing of re-offense. CYFA expects outcomes to comport with the growing body of research demonstrating restorative justice programs to be more effective than traditional court and school discipline settings. In addition, PEER will compile, analyze, and use data to dismantle racial and ethnic disparities in school discipline and delinquency cases. Finally, PEER will work with local partners to meet the needs of program participants, their families, and the community.

PEER is available to youth between the ages of 10 to 18 (or 19-year-old seniors) facing certain criminal charges or school disciplinary proceedings. Typically, police refer delinquency cases to a juvenile court while schools handle violations with out-of-school suspensions and other sanctions. A PEER referral bypasses these outdated and ineffective approaches while delivering a more equitable and lasting outcome for all.

Join Our Coalition

A Call to Action

PEER is a holistic, community-based restorative practice program working in partnership with key local stakeholders, including Arlington Department of Human Services, Arlington Public Schools, Arlington County Police Department, and the Office of the Commonwealth's Attorney for Arlington County and the City of Falls Church.



We appreciate your financial support in this important social justice initiative. CYFA thanks the Arlington Partnership for Children, Youth and Families Foundation (Partnership Foundation), which has already approved a grant request to launch PEER, providing funding from its Mary Ann Moran Memorial Fund.

Mary Ann created the Partnership Foundation to improve the well-being of the Arlington community through transformative initiatives. A tireless advocate for Arlington families, Mary Ann taught preschool in Westover and parenting classes at the Arlington Adult Detention Center. Mary Ann's hope for the future: "Imagine a community where all young people's needs are met and their voices heard."

CYFA asks you to join our coalition as a PEER Partner (\$2,500), PEER Ambassador (\$1,000), or PEER Supporter (\$500). CYFA is a 501(c)(3) organization, and donations are tax deductible in accordance with federal law. Please contact us to complete sponsorship information.

You can donate online by visiting www.cyfadadvocacy.org or by forwarding your donation by mail to:

**Center for Youth & Family Advocacy
2111 Wilson Boulevard, 8th Floor
Arlington, Virginia 22201
cyfadadvocacy.org/peer/**

